

Alaska Department of Fish and Game

Habitat Section
Southeast Region



191-20-13400-2030 Tributary 1

ADDITION

Water body name:

Survey date: 7/18/2024

Quad: Icy Bay D2, D3

Species & Lifestage:

Upper Reach Latitude: 59.985362 **Longitude:** -141.713770

Survey crew: NJ, CD, DK

Lower Reach Latitude: 59.979063 **Longitude:** -141.724424

Findings: We surveyed this uncataloged stream using a backpack electrofisher, baited minnow traps, and GPS and captured juvenile coho salmon. This stream crosses the road under an old bridge; no fish passage issue seen. Above the bridge, the channel intersects with a ditch stream and continues uphill where it seeps out of the ground approximately 200 ft from the confluence (Table 1; Figures 1–3).

Recommendations: Add this uncataloged stream to the anadromous waters catalog for rearing coho salmon up to waypoint 591 (Figure 4).

Nomination: Pending

Table 1.–191-20-13400-2030 tributary 1 survey data.

Waypoint	Latitude	Longitude	Notes	Stream Width ft	Stream Substrate	Habitat Features	Gradient %	Sample Effort	Sample Results
591	59.985297	-141.713829	Small channel with lid bridge over it. Fine sandy substrate and shallow water with slow flow. Not shown on map.		Sand		1-2	MT	7 CO
1163	59.985641	-141.712932	Channel parallels Road at base of Hill and then water runs out approximately 200 feet upstream. Smaller ditch adjacent to road also has water in it, but separated from this channel by upwelled land/berm.		Fine Organic		1-2	EF	
1165	59.985404	-141.713584	Confluence where the tributary enters the ditch that parallels the road. CO caught in the trib just upstream of confluence.		Fine Organic		0-1		



Figure 1.–Juvenile coho salmon caught at waypoint 591.



Figure 2.—Upstream of bridge, looking downstream.



Figure 3.—Channel downstream of bridge.

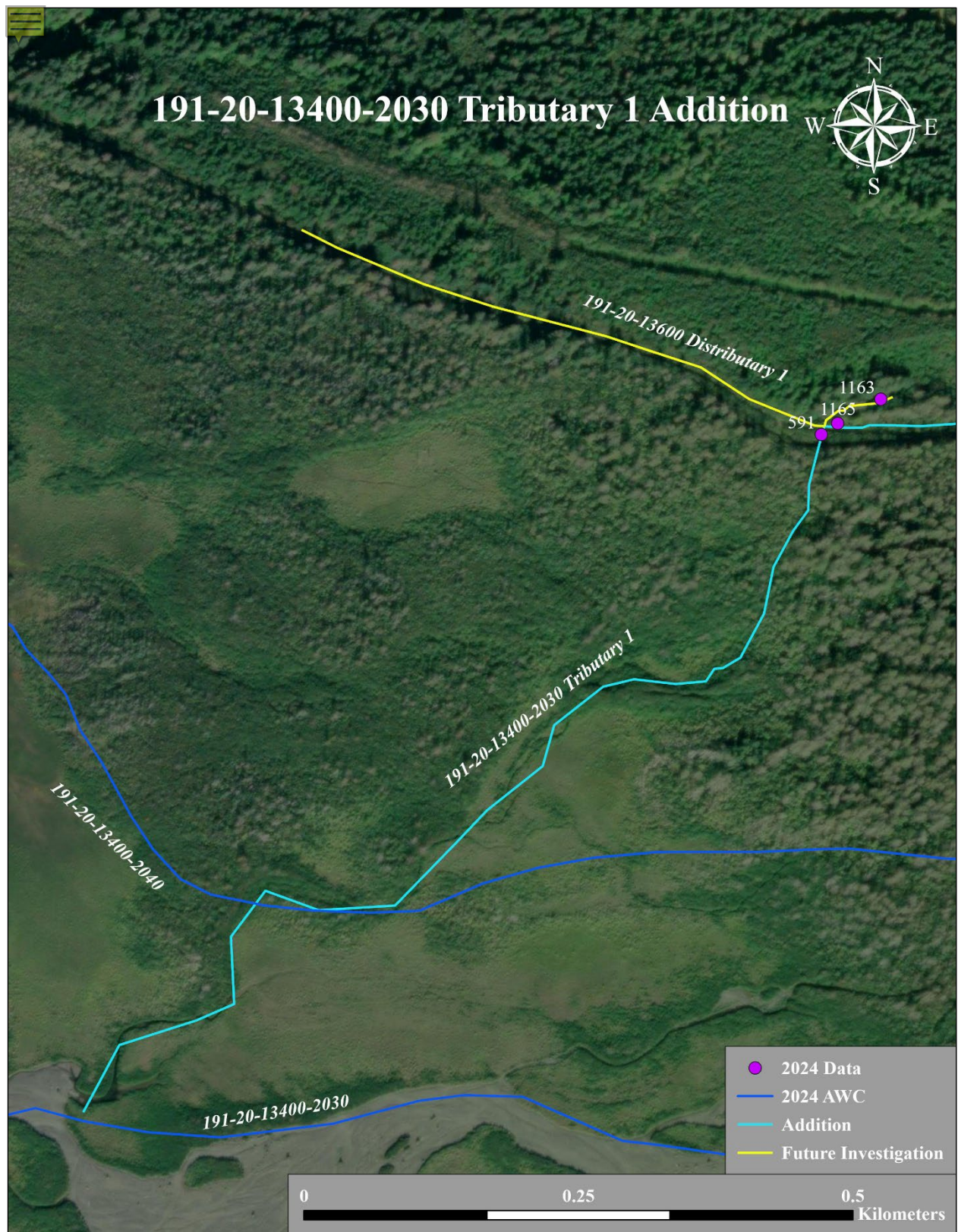


Figure 4.-191-20-13400-2030 tributary 1 addition map.